



E9*65R00/11*6908*00

Página / Page 1/2



COMUNICACIÓN / COMMUNICATION:

Concerniente a ⁽¹⁾: LA CONCESIÓN DE HOMOLOGACIÓN
 LA EXTENSIÓN DE HOMOLOGACIÓN
 LA DENEGACIÓN DE HOMOLOGACIÓN
 LA RETIRADA DE HOMOLOGACIÓN
 EL CESE DEFINITIVO DE PRODUCCIÓN

Concerning ⁽¹⁾: APPROVAL GRANTED
 APPROVAL EXTENDED
 APPROVAL REFUSED
 APPROVAL WITHDRAWN
 PRODUCTION DEFINITELY DISCONTINUED

de un tipo de luz especial de aviso para automóviles en aplicación del Reglamento N° 65.
of a type of special warning lamp for motor vehicles, pursuant to Regulation No.65.

N° de homologación / Approval No.: E9*65R00/11*6908*00

Extensión N° / Extension No.: ---

- Luz especial de aviso / rotativa / luz estacionaria intermitente / ~~luz direccional intermitente / barra completa / media barra~~ / azul / amarillo auto / rojo ⁽¹⁾ / Special warning lamp / rotating / stationary flashing lamp / ~~directional flashing lamp / complete bar / half bar~~ / blue / amber / red ⁽¹⁾
- Luz especial de aviso con un / dos nivel(es) de intensidad ⁽¹⁾ / Special warning lamp has one / ~~two~~ level(s) of intensity ⁽¹⁾
Luz especial de aviso formada por --- unidades separadas / Special warning lamp consists of --- separate units
- Para las luces especiales de aviso con dos niveles de intensidad, sistema empleado para obtener intensidad reforzada de día / For special warning lamps having two levels of intensity, indicate the system used to obtain increased intensity at daytime: ---
- Fuente de luz utilizada / Used light source:
 - categoría de lámpara de incandescencia / category of filament lamp: sí / yes - no / no ⁽¹⁾
 - lámpara de descarga de gas / gas discharge light source: sí / yes - no / no ⁽¹⁾
 - LED: sí / yes - ~~no~~ / no ⁽¹⁾
 - Módulo de fuente de luz / Light source module: sí / yes - no / no ⁽¹⁾
Código específico de identificación del módulo de fuente de luz / Light source module specific identification code: ---
- Tensión nominal de la luz especial de aviso / Rated voltage of special warning lamp: 12/24 V
- Marca o denominación comercial / Trade name or mark: FRISTOM
Tipo / Type: FT-151 LED

⁽¹⁾ Táchese lo que no proceda / Strike out what does not apply





E9*65R00/11*6908*00

Página / Page 2/2



7. Nombre y dirección del fabricante / *Manufacturer's name and address:*

FRISTOM SPÓLKA Z OGRANICZONA
ODPOWIEDZIALNOSCIA SPÓLKA
KOMANDYTOWA
UL. PRZEMYSŁOWA 5, 86-014
85416 SICIENKO
SICIENKO (POLONIA)

Nota / *Note:* Este dispositivo puede ser fabricado en cualquiera de las Plantas de Fabricación que consten declaradas en el Anexo I del Certificado Conformidad Producción en vigor emitido por la UCA. / *This device may be manufactured in any of the Manufacturing Plants declared in Annex I of the Conformity Production Certificate in force issued by the UCA.*

8. En su caso, nombre y dirección del representante del fabricante / *If applicable, name and address of manufacturer's representative: ---*

9. Dispositivo presentado a homologación el / *Submitted for approval on: 18/10/2022*

10. Servicio técnico encargado de los ensayos de homologación / *Technical service responsible for conducting approval test: IDIADA*

11. Fecha del informe emitido por dicho servicio / *Date of report issued by that service: 19/10/2022*

12. Número del informe emitido por dicho servicio / *Number of report issued by that service: PC22100034*

13. Se concede/~~deniega~~/~~extiende~~/~~retira~~ la homologación ⁽¹⁾ / *Approval granted/~~refused~~/~~extended~~/~~withdrawn~~ ⁽¹⁾*

14. Motivos de la extensión (en su caso) / *Reason(s) of extension (if applicable): ---*

15. Lugar / *Place: Madrid*

16. Fecha / *Date: Ver firma electrónica / See electronic signature*

17. Firma / *Signature:*

EL SUBDIRECTOR GENERAL DE CALIDAD Y SEGURIDAD INDUSTRIAL
Resolución P.D. del DIRECTOR GENERAL DE INDUSTRIA Y DE LA PYME de 25-10-2012

18. Se adjunta la lista de apartados que constituyen el expediente de homologación depositado en el servicio administrativo que ha concedido la homologación y que pueden ser obtenidos a petición. / *The list of documents deposited with the Administrative Service which has granted approval is annexed to this communication and may be obtained on request.*

- Informe del ensayo / *Test report*
- Documentación suministrada por el fabricante / *Documentation supplied by the manufacturer*

⁽¹⁾ Táchese lo que no proceda / *Strike out what does not apply*



Manufacturer:

FRISTOM Spółka z ograniczoną odpowiedzialnością Sp.K.
 86-014 Sicienka / Polska
 ul. Przemysłowa 5
 NIP: 5542926937, KRS: 0000529238
 Tel.: +48 52 360 90 51, Fax: +48 52 327 75 41

**Drawn by:**

Michał Dybicz

Date:

13-10-2022

Sheet:

1 of 4

Type:**FT-151 LED****Special warning lamp category TA1****Light source:**

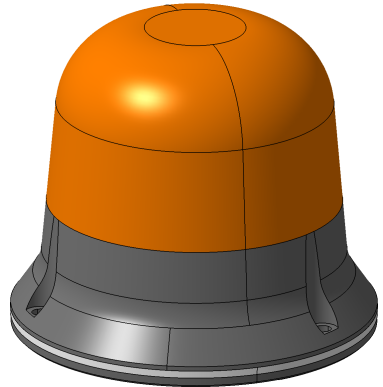
LED CHIP SMD chip mounted
 24 LED's amber light color

Description:**isometric lamp view / variants**

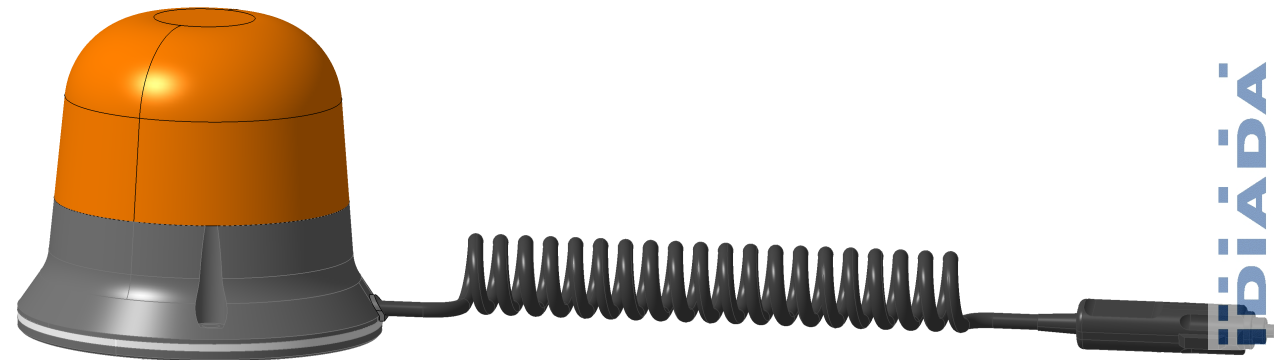
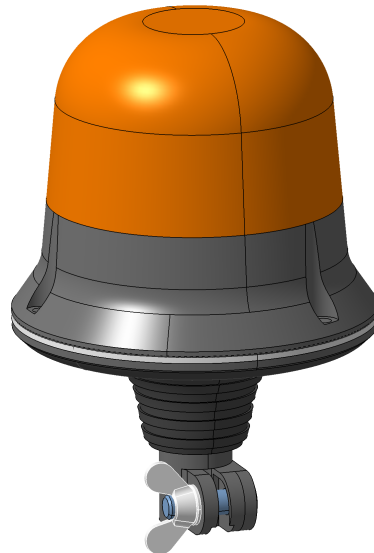
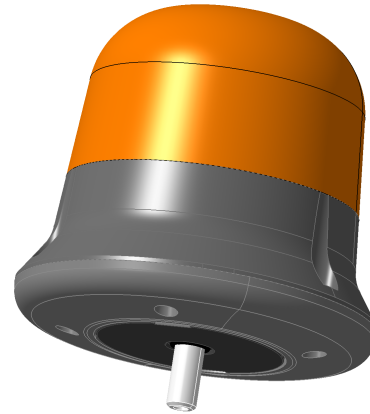
This drawing is a part of the application for approval

Material used in manufacturing :

- lampshade / lens PC clear transparent amber
- housing ABS/PC black
- fitting ring ABS/PC black
- potting compound epoxy resin
- printed circuit board type FR4
- light source 24 amber LED's
- reflector PC or ABS PVD aluminum coated



Isometric view
 Scale: 1:3



Isometric view
 Scale: 1:3

Manufacturer:

FRISTOM Spółka z ograniczoną odpowiedzialnością Sp.K.
 86-014 Sicienko / Polska
 ul. Przemysłowa 5
 NIP: 5542926937, KRS: 0000529238
 Tel.: +48 52 360 90 51, Fax: +48 52 327 75 41



Drawn by: Michał Dybicz
Date: 13-10-2022
Sheet: 2 of 4

Type:

FT-151 LED

Special warning lamp category TA1

Light source:

LED CHIP SMD chip mounted
 24 LED's amber light color

Description:

**general drawing , light emitting areas,
 assembly position**

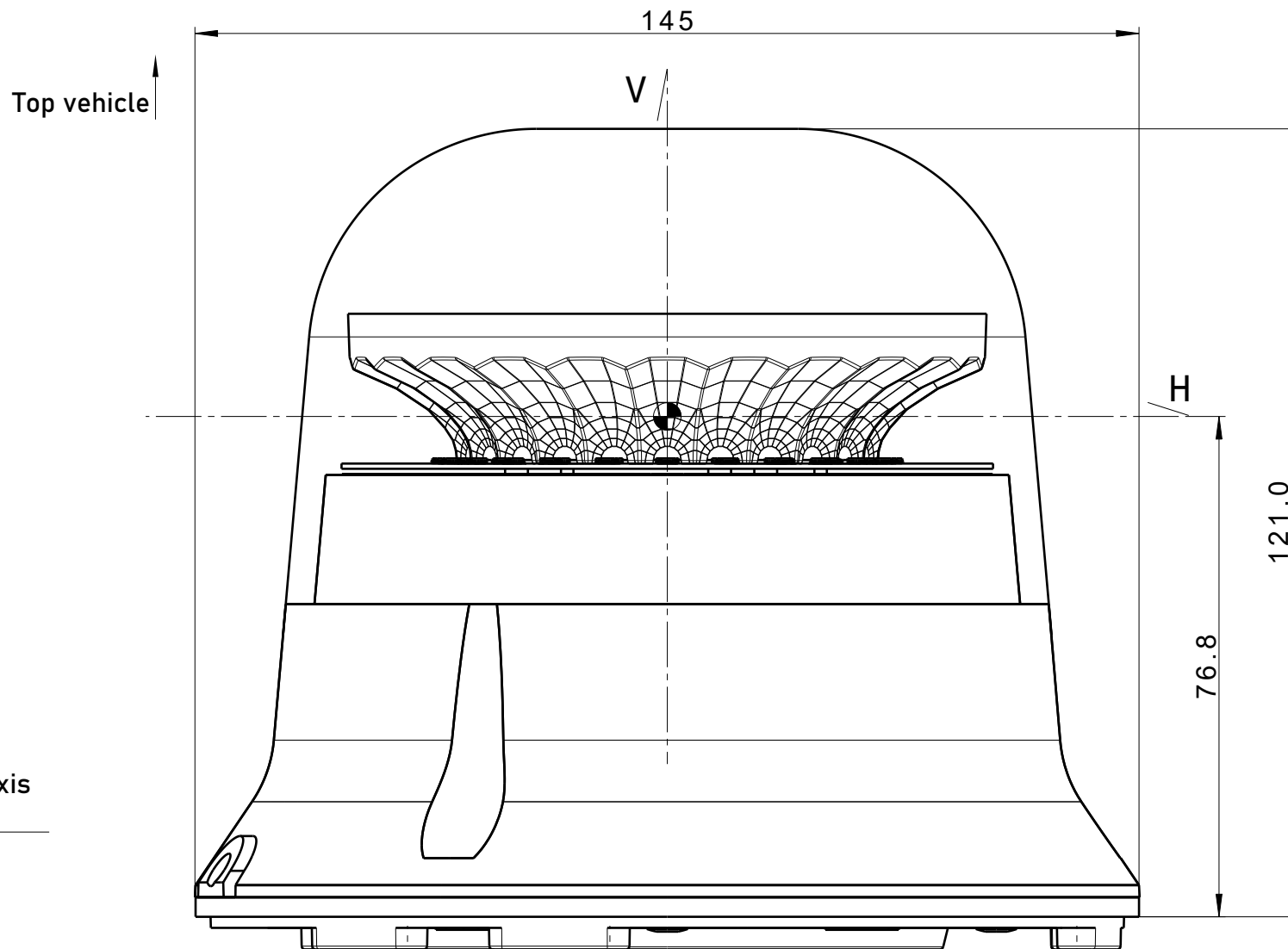
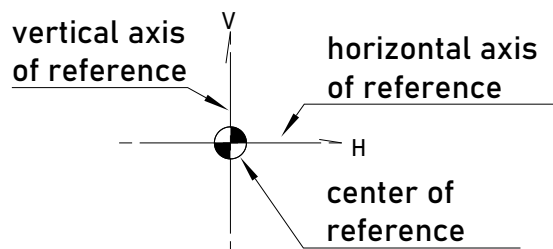
This drawing is a part of the application for approval

Material used in manufacturing :

- lampshade / lens PC clear transparent amber
- housing ABS/PC black
- fitting ring ABS/PC black
- potting compound epoxy resin
- printed circuit board type FR4
- light source 24 amber LED's
- reflector PC or ABS PVD aluminum coated

**flashing patterns / variants
 [f~2Hz]:**

- variant FT-151 LED - single flash
- variant FT-151 DF LED - double flash
- variant FT-151 RO LED - rotating



iĎiÄÄÄ PC22100034

Manufacturer:

FRISTOM Spółka z ograniczoną odpowiedzialnością Sp.K.
 86-014 Sicienko / Polska
 ul. Przemysłowa 5
 NIP: 5542926937, KRS: 0000529238
 Tel.: +48 52 360 90 51, Fax: +48 52 327 75 41

**Type:**

FT-151 LED

Special warning lamp category TA1

Light source:

LED CHIP SMD chip mounted
 24 LED's amber light color

Description:

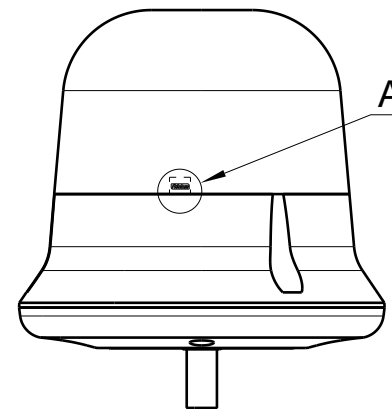
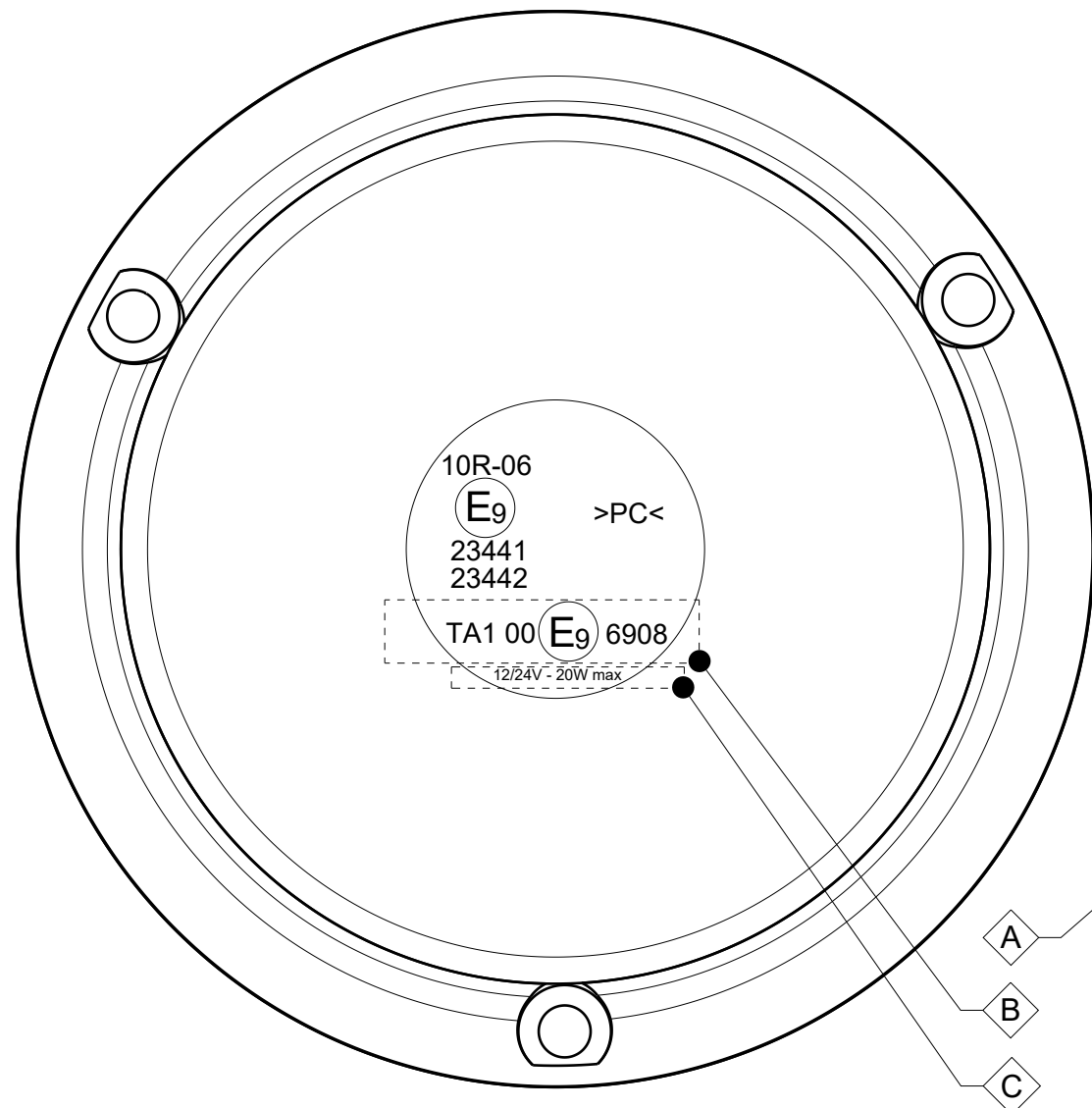
approval, trademark and electrical parameters markings
 electrical connection of LED's

This drawing is a part of the application for approval

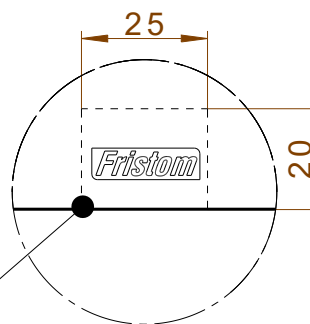
Material used in manufacturing :

- lampshade / lens PC clear transparent amber
- housing ABS/PC black
- fitting ring ABS/PC black
- potting compound epoxy resin
- printed circuit board type FR4
- light source 24 amber LED's
- reflector PC or ABS PVD aluminum coated

Drawn by: Michał Dybicz
Date: 13-10-2022
Sheet: 3 of 4



Front view
 Scale: 1:3



Detail A
 Scale: 2:1

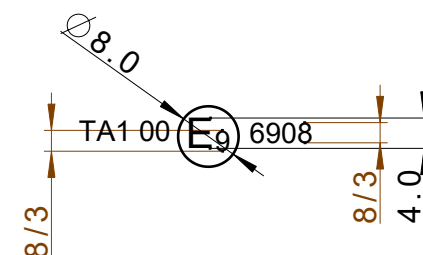
A	trademark location
B	approval numbers
C	electric parameters

LED connection

3 LED's serial connected in 8 parallel sections

electrical data

variant FT-151 LED - 12/24V - 18/20W
 variant FT-151 DF LED - 12/24V - 18/20W
 variant FT-151 R0 LED - 12/24V - 6V

approval mark dimensions

Manufacturer:

FRISTOM Spółka z ograniczoną odpowiedzialnością Sp.K.
86-014 Sicienko / Polska
ul. Przemysłowa 5
NIP: 5542926937, KRS: 0000529238
Tel.: +48 52 360 90 51, Fax: +48 52 327 75 41

**Type:****FT-151 LED****Special warning lamp category TA1****Material used in manufacturing :**

- lampshade / lens PC clear transparent amber
- housing ABS/PC black
- fitting ring ABS/PC black
- potting compound epoxy resin
- printed circuit board type FR4
- light source 24 amber LED's
- reflector PC or ABS PVD aluminum coated

Light source:

LED CHIP SMD chip mounted
24 LED's amber light color

Description:**variants / tradenames**

This drawing is a part of the application for approval

Drawn by: Michał Dybicz**Date:** 13-10-2022**Sheet:** 4 of 4

variant	description
FT-151 3S LED	FT-151 3S LED Yellow LED warning beacon, single flash, mounted on 3 screws. Cable's length 1.5 m.
FT-151 LED MAG M30	FT-151 LED MAG M30 Yellow LED warning beacon mounted on a magnet, single flash. Additionally, the lamp is equipped with a spiral cable (unfolded – 3 m, in spiral – 0.6 m) and a standard 12/ 24V lighter plug.
FT-151 LED MAG M78	FT-151 LED MAG M78 Yellow LED warning beacon mounted on a magnet, single flash. Additionally, the lamp is equipped with a spiral cable (unfolded – 7.8 m, in spiral – 1.2 m) and a standard 12/ 24V lighter plug.
FT-151 LED PI	FT-151 LED PI Yellow LED warning beacon, single flash. The lamp appears in a stationary LED 12-36V version with a pipe-socket and electrical connector type PLUG-IN (DIN 14620).
FT-151 SC LED	FT-151 SC LED Yellow LED warning beacon, single flash. The lamp appears in a stationary LED 12-36V version with a single bolt and a loom.
FT-151 3S DF LED	FT-151 3S DF LED Yellow LED warning beacon, double flash, mounted on 3 screws, cable's length 1.5 m.
FT-151 DF LED MAG M30	FT-151 DF LED MAG M30 Yellow LED warning beacon, double flash, portable version mounted on a magnet. The lamp is equipped with a spiral cable (unfolded – 3 m, in spiral – 0.6 m) and a standard 12/ 24V lighter plug.
FT-151 DF LED MAG M78	FT-151 DF LED MAG M78 Yellow LED warning beacon, double flash, portable version mounted on a magnet. The lamp is equipped with a spiral cable (unfolded – 7.8 m, in spiral – 1.2 m) and a standard 12/ 24V lighter plug.
FT-151 DF LED PI	FT-151 DF LED PI Yellow LED warning beacon, double flash. The lamp appears in a stationary LED 12-36V version with a pipe-socket and electrical connector type PLUG-IN (DIN 14620).
FT-151 SC DF LED	FT-151 SC DF LED Yellow LED warning beacon, double flash. The lamp appears in a stationary LED 12-36V version with a single bolt and a loom.
FT-151 3S RO LED	FT-151 3S RO LED Yellow LED warning beacon, rotation flash, mounted on 3 screws. Cable's length 1.5 m.
FT-151 RO LED MAG M30	FT-151 RO LED MAG M30 Yellow LED warning beacon mounted on a magnet, rotation flash. Additionally, the lamp is equipped with a spiral cable (unfolded – 3 m, in spiral – 0.6 m) and a standard 12/ 24V lighter plug.
FT-151 RO LED MAG M78	FT-151 RO LED MAG M78 Yellow LED warning beacon mounted on a magnet, rotation flash. Additionally, the lamp is equipped with a spiral cable (unfolded – 7.8 m, in spiral – 1.2 m) and a standard 12/ 24V lighter plug.
FT-151 RO LED PI	FT-151 RO LED PI Yellow LED warning beacon, rotation flash. The lamp appears in a stationary LED 12-36V version with a pipe-socket and electrical connector type PLUG-IN (DIN 14620).
FT-151 SC RO LED	FT-151 SC RO LED Yellow LED warning beacon, rotation flash. The lamp appears in a stationary LED 12-36V version with a single bolt and a loom.